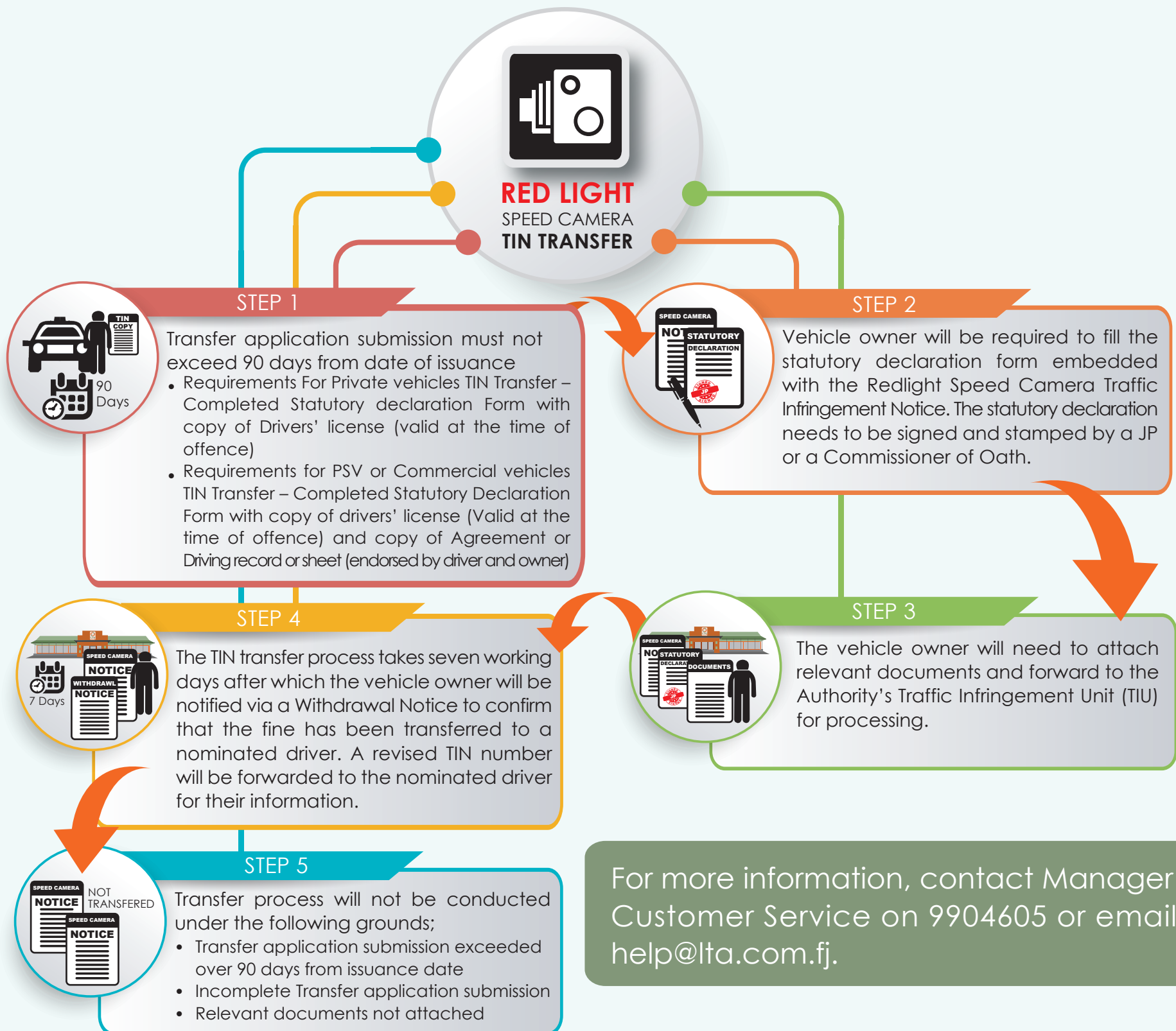


TIN TRANSFER PROCESS

Did you know...

that if you were not the driver at the time of a traffic violation recorded by a red light speed camera, you have the option to transfer the Traffic Infringement Notice (TIN) to the responsible driver?

Here are the steps you can follow to complete the transfer.



Please Note that AFFIX PENALTY can only be transferred for manual bookings

Check List to bring:

