

Module 7

Road Marking Signs And Traffic Light

Module Objectives

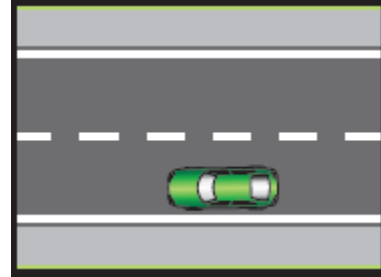
By the end of this module you should;

- Be able to know about the different road line markings.
- Be able to identify road signs.
- Be able to identify traffic signals and pedestrian crossing lights.

ROAD MARKING

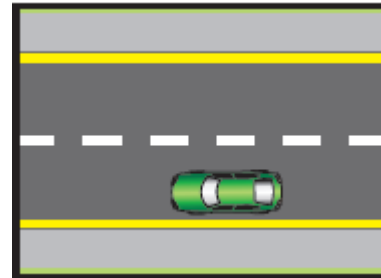
Edge Markings

- The edge of road marking is to help the driver keep clear of the edge of the tar seal and is especially useful for providing guidance at night.



Yellow Edge Marking

- This continuous yellow edge marking on the road indicates, stopping and parking is prohibited at all times.

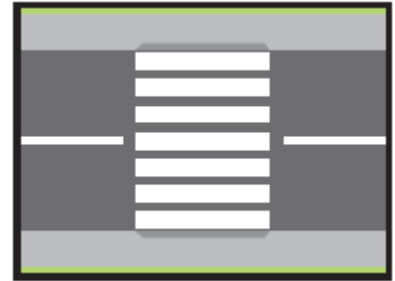


Uncontrolled Pedestrian Crossing Lights

- The amber single lights which flash alternately indicate the position of and uncontrolled pedestrian crossing.
- Pedestrian should attempt to cross the road at this position only when there is no oncoming traffic and when crossing can be done safely.

Uncontrolled Pedestrian Crossing

- Pedestrians have priority over vehicular traffic at these crossing places. If there is a pedestrian on the marked crossing area, or waiting to cross, **YOU MUST STOP YOUR VEHICLE**, before reaching the crossing and allow the pedestrian to cross in front of you. **DO NOT PASS** a vehicle that has stopped at a pedestrian crossing. Someone who is on the crossing might walk out in front of you.



PEDESTRIAN ISLAND REFUGES

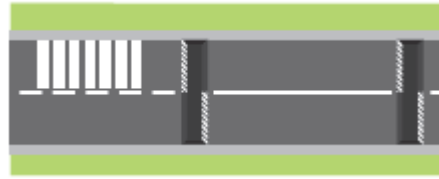
Pedestrian Island Refuges

- These islands have been provided to give physical protection to pedestrians, crossing a road. Pedestrians should use these wherever they are available
 - When safe to do so, cross one direction of the traffic.
 - Then wait at the refuge.
 - When safe to do so cross the other direction of the traffic.
- Pedestrians must not attempt to cross the full width of the road at once but take the protection of the islands.
- Motorists must at all-time pay due care and attention to the pedestrians attempting to cross the road or are waiting on the "Pedestrian Island Refuge".

REMEMBER, PEDESTRIAN SAFETY IS A DRIVER'S RESPONSIBILITY

Roadway Bar Markings

- Bar Markings are used in the approach zone as the initial warning to the driver that a speed reduction required. They are painted on the carriage way immediately in advance of the village entry point or "Gateway".



Road Markings

- Standard marking of a two-way street with uncontrolled pedestrian crossing.
- Marking of a one-way street with junction and uncontrolled pedestrian crossing.



Stay on the left hand side of the road

- Advance warning is given to motorists that they are approaching a section of road where passing is prohibited by arrows painted in the center of the road as shown on the illustration.
- These arrows mean motorists should stay on the left hand side of the road or return to it quickly if they are already passing another vehicle.



Generally, a series of two arrows are laid on each approach to double white lines.



ROAD LINE MARKING

LINES ACROSS THE ROAD

Unbroken Double Lines

- The unbroken double lines at a **STOP** sign are where you must come to a complete halt. You must give way to all vehicles on the road you are entering and only continue when it is safe to do so.

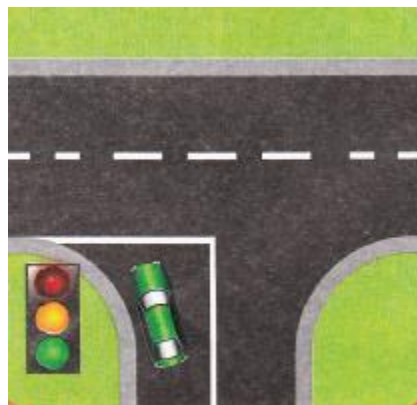
Broken Double Lines

- The broken double lines at a **GIVE WAY** sign are a guide for slowing and be prepared to stop if there are any vehicles on the road you are entering. Even if there is no **GIVEWAY** sign you must still give way when you come to these lines.



Unbroken Single Lines

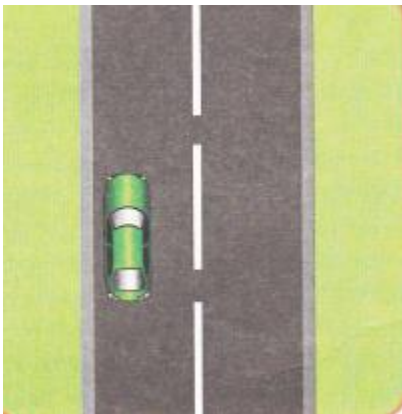
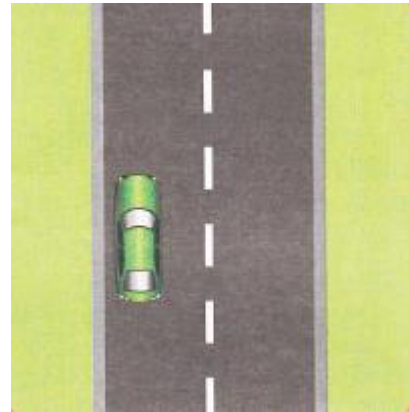
- The unbroken single lines at traffic lights show where you **MUST** come to a **STOP** when the red light is showing.



LINES ALONG THE ROAD

Broken Lines

Broken white lines -You should keep to the left of these lines. You can cross them to pass but otherwise you must drive as close as practicable to the left hand side of the road as you can. As shown, this is a short white line (1-meter-long) with a long space (5 meters) in-between.

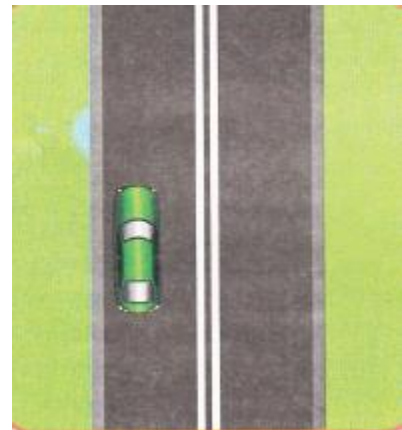


Warning Line

When you are approaching or passing through a hazard e.g. a narrow bridge or approach to a bend, the centre line may change as shown here. The white marks become longer (4 meters) and the space is short (2 meters). This is a **WARNING LINE** and should not be crossed unless it is seen to be safe to do so.

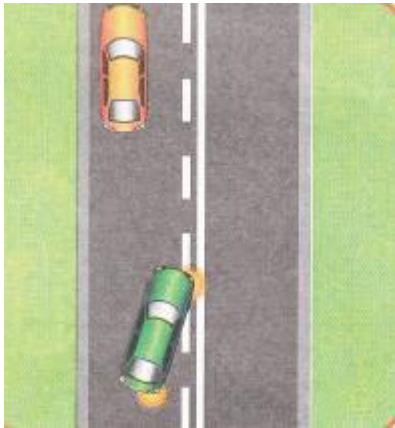
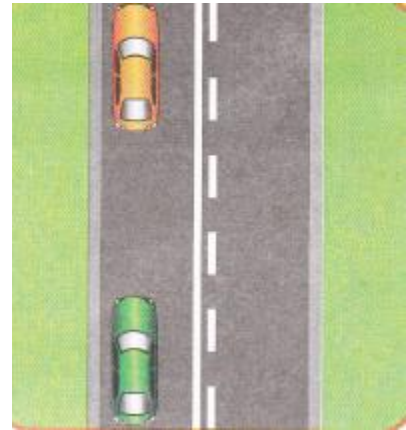
Double Unbroken White Lines

- Double unbroken white lines – you must keep left of double white lines. You must not cross them to pass, to do any turn, nor park opposite them



Double white lines with an UNBROKEN Line

- Double white lines with an UNBROKEN line closer to you – You must keep left of these lines. **DO NOT PASS**



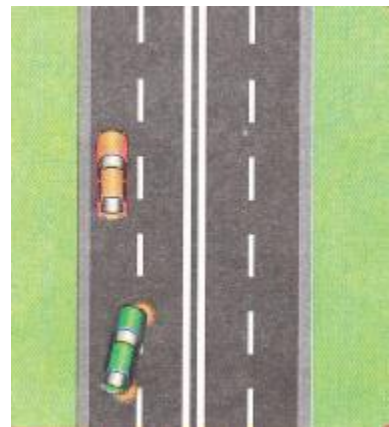
Double white lines with an BROKEN Line

- Double white lines with a BROKEN line closer to you - You may cross these lines to pass if the road ahead is clear, and safe to do so.

LANE MARKINGS

White Lines

White lines – These are often used to separate lanes of traffic going in the same direction. You may move from one lane to another if you signal 3 seconds or more, and it is safe to change lanes. But be sure to stay as much as possible to the left within a single marked lane. Keep left unless passing. When moving into another lane you must give way to traffic in that lane.



TRAFFIC SIGNALS

Traffic Signals

- All traffic must approach the intersection or pedestrian crossing with caution and be prepared to stop. If a vehicle is already in the process of crossing or turning at the intersection or pedestrian crossing, you may proceed to do so with caution. These are generally for straight ahead traffic. If no other direction arrows are present, turns may be made.

'STOP" (Red)

- All traffic must stop when the red light or arrow is illuminated,

"AMBER" (Orange)

- Stop unless you have crossed the approaching line.

"GO" (Green)

- All traffic may proceed straight ahead if safe to do so or as indicated by directional arrows, if any.

Single Direction Arrow

- This single arrow is for turning traffic only.
- If this signal is, "OFF", then respond to other traffic signals.

PEDESTRIAN CROSSING LIGHT PAGE

"Don't Walk (Don't Cross) Symbol

- A RED MAN figure appears illuminated.
- When this symbol is seen pedestrian should not cross the road but wait safely on the footpath.

"Walk" (Cross) Symbol

- A GREEN MAN figure appears illuminated.
- When this symbol is seen pedestrians should cross the road briskly. Do not run across the road but walk quickly.
- When this symbol starts flashing, you must either complete the crossing if you have already attempted to do so, if you have not started to cross, then wait for the next cycle of Green Man figure to appear before crossing.

Emergency" Intersection Signals

- Flashing signals will operate in times of emergency
- Main Road
 - Red flashing light
 - Proceed with caution
- Side Road
 - Amber flashing light
 - Stop, and then proceed with extreme caution.

ROAD SIGNS



ROAD SIGNS

MANDATORY SIGNS			
	1. GIVE WAY		8. MINI ROUNDABOUT
	2. STOP		9. MAXIMUM SPEED LIMIT
	3. STOP POLICE		10. STOP SCHOOL PATROL
	4. KEEP LEFT		11. STOP (Temporary Control)
	5. PROCEED ONLY IN THE DIRECTION INDICATED BY ARROW (The arrow may point to left, right or straight ahead)		12. GO (Temporary Control)
	6. PASS EITHER SIDE		13. ONE-WAY
	7. TURN LEFT AHEAD		14. POLICE SLOW
			15. Plate for use with signs in diagram 1 or 2 at open level crossing without signals
			16. Priority to vehicles from the opposite direction
			17. Priority over vehicles from the opposite direction. (This sign is not mandatory but must be used in conjunction with sign 16)
			18. RAILWAY LEVEL CROSSING Must be used with sign 15 and signs 1 or 2
			19. DISTANCE PLATE For use with sign No. 2
			20. DISTANCE PLATE For use with sign No. 1
			21. DISTANCE PLATE For use in indicating the length of road subject to the instruction on accompanying sign.
			22. DUAL CARRIAGEWAY For use with sign to diagram No. 7 where side road traffic joins a dual carriageway. To be sited to face the side road traffic.
			23. SCHOOL CROSSING FLAG
			24. SCHOOL CROSSING POSTS



ROAD SIGNS

PROHIBITORY SIGNS

	1. NO ENTRY - ALL VEHICLES PROHIBITED		7. GROSS VEHICLE WEIGHT LIMIT Vehicles and load exceeding the weight indicated in tonnes are prohibited		13. USE OF AUDIBLE WARNING DEVICE PROHIBITED
	2. COACHES AND BUS PROHIBITED		8. ONLY ONE VEHICLE ON BRIDGE Plate for use with sign No. 7 where appropriate		14. NO PARKING
	3. GOODS VEHICLE PROHIBITED		9. NO RIGHT TURN		15. NO STOPPING
	4. Plate for use with signs no. 2, 3 and 5		10. NO LEFT TURN		16. Plate for use with signs 14 & 15 to indicate that the restriction or prohibition applies in both directions.
	5. GOODS VEHICLE having a capacity of 7.5 tonnes gross weight, or more, PROHIBITED		11. NO "U" TURN		17. Plate for use with signs 14 & 15 to indicate the direction in which the restriction or prohibition applies.
	6. AXLE WEIGHT LIMIT Vehicles or vehicles and loaded exceeding the weight indicated in tonnes on any one axle are prohibited		12. NO OVERTAKING		18. Plate showing end of prohibition for use with signs 11, 12 and 13
					19. WIDTH LIMIT Vehicles exceeding the width indicated are prohibited. Permitted variant: The figures may be altered



ROAD SIGNS

INFORMATORY SIGNS

	1. TURN RIGHT		7. ROUNDABOUT AHEAD		13. BEND TO THE RIGHT
	2. KEEP STRAIGHT		8. BEWARE OF CHILDREN		14. DOUBLE BEND
	3. NO ENTRY FOR CARS		9. SERIES OF BENDS		15. ROAD NARROWS
	4. NO ENTRY FOR CARS AND MOTORCYCLES		10. T JUNCTION		16. NARROW BRIDGE
	5. PEDESTRIAN CROSSING		11. SIDE ROAD		17. SLIPPERY ROAD
	6. CROSS ROADS		12. TRAFFIC MERGE		18. OTHER DANGER
	19. BEWARE OF ANIMALS		24. LOW FLYING AIRCRAFT		29. RAILWAY CROSSING AHEAD
	20. ROAD WORKS		25. HEIGHT LIMIT		30. PARKING PERMITTED
	21. STEEP HILL		26. WATER CROSSING		31. A ZONE GOVERNED BY PARKING METERS
	22. HUMPED ROAD		27. FALLING ROCKS		32. HOSPITAL
	23. RAILWAY LEVEL CROSSING WITHOUT GATES		28. NO THROUGH ROAD		33. END OF SPEED RESTRICTION

SCHOOL PATROL

- Many schools are situated along major road networks but do not have a zebra crossing facility in close vicinity. However, the teachers take the responsibility to manage the safe crossing of the school children.
- The School Patrol Scheme is one such program that provides for a safe road crossing environment for the school children and supervised by the teachers.
- All motorists must be alert and comply to the signals and instructions given by these "School Patrol"

REMEMBER, CHILDREN'S SAFETY IS EVERY DRIVER'S RESPONSIBILITY

3 whistle signals steps

1st whistle School Patrol Signs up. All vehicles should come to a complete halt.

Will only be blown after all vehicles on both sides have come to a complete halt and the road is clear.

2nd whistle This whistle indicates to the children to cross the line. (Keep a look out for the second vehicle for they sometimes overtake when the first vehicle has stopped)

3rd whistle After all the children have crossed safely the 3rd whistle is blown to allow traffic to proceed.

Module Summary

This module summarizes the different road line markings and road signs as well as identifies the traffic signals and pedestrian crossing lights.